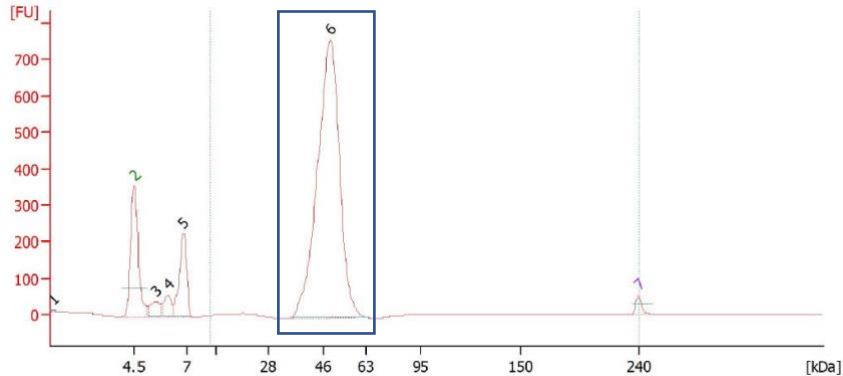


anatrace

PRODUCT DATASHEET

Catalog No.:	ANA-COV-04 1000
Pack Size:	1 mg Please enquire at customerservice@anatrace.com for bulk requirements
Product Name:	SARS-CoV-2 Receptor-Binding Domain (S1-RBD), His-Tag
Description:	Recombinant spike glycoprotein receptor binding domain (RBD) from severe acute respiratory syndrome-related coronavirus (SARS-CoV-2), Wuhan-Hu-1-isolate, produced under serum-free conditions in HEK-INV cells (In Vivo proprietary optimized; HEK293 cells).
Species:	2019-nCoV, COVID-19
Sequence:	The construct contains 223 residues of the SARS-CoV-2 Spike Glycoprotein Receptor-binding domain (RBD), representing amino acid residues 319 to 541 (aa 319-541). The protein is fused to the C-terminus with a hexahistidine tag.
Accession No.:	QHD43416.1 (Uniprot)
Tag:	6 x His-Tag; C-terminal
Host:	Expressed in HEK293 Expi cells
Applications:	ELISA
Purity:	>90% (via analytical CGE under reducing conditions)
Predicted Molecular Mass:	~26 kDa (glycosylated form runs at 40 – 55 kDa in gel electrophoresis)  Peak 1: 0.2 kDa Peak 2: 4.5 kDa (Protein Ladder Marker) Peak 3: 5.5 kDa (System Peak) Peak 4: 6.1 kDa (System Peak) Peak 5: 6.8 kDa (System Peak) Peak 6: 48.5 kDa Peak 7: 240.0 kDa (Protein Ladder Marker)
Formulation:	Liquid, 20mM NaPP, 300mM NaCl pH 7.2
Endotoxin:	Endotoxin level is < 0.001 EU/µg purified protein (LAL test)
Storage:	2°C to 8°C

Protein Activity:

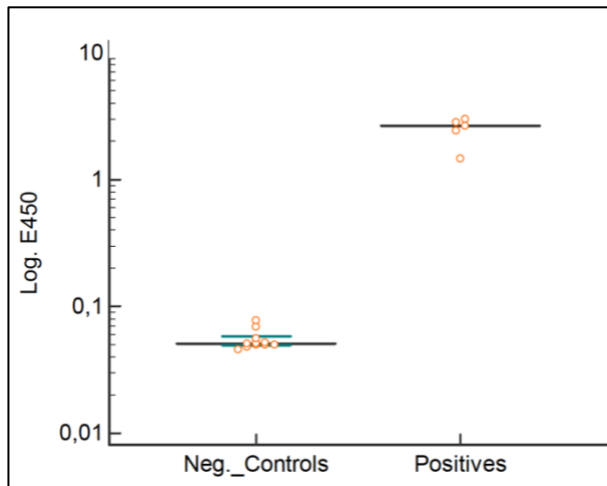


Figure 1. SARS-CoV-2 IgG ELISA using BSV-COV-PR-48HEK as solid-phase bound capture antigen at 2 µg/mL in an in-house ELISA.

5 SARS-CoV-2 positive patients tested by PCR vs 11 negative controls at 1:400 sample dilution.

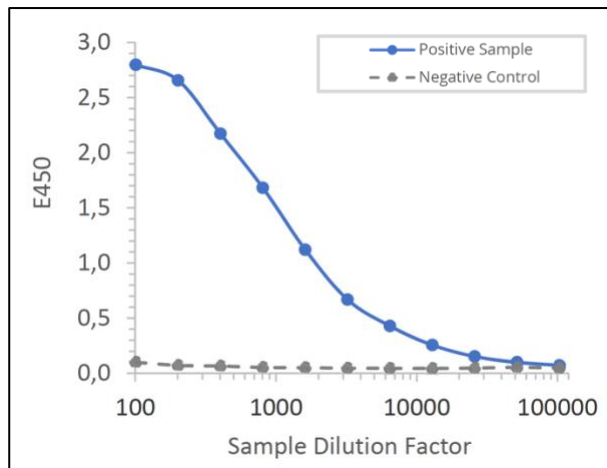


Figure 2. Titration curve of a SARS-CoV-2 antibody-positive patient serum sample and negative control serum on solid-phase bound RBD of SARS-CoV-2 spike glycoprotein.

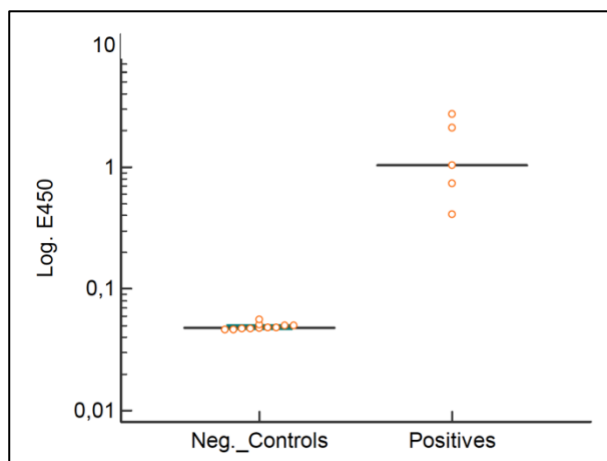


Figure 3. SARS-CoV-2 IgG ELISA using BSV-COV-PR-48HEK as solid-phase bound capture antigen at 2 µg/mL, in combination with RBD-Biotin conjugate as soluble detector/tracer at 1 µg/mL in an in-house ELISA.

5 SARS-CoV-2 positive patients tested by PCR vs 11 negative controls at 1:160 sample dilution.